
This is an electronic reprint of the original article.
This reprint may differ from the original in pagination and typographic detail.

Ahlava, Antti

International CECC Design Competition

Published: 30/10/2020

Document Version

Peer-reviewed accepted author manuscript, also known as Final accepted manuscript or Post-print

Published under the following license:

Other

Please cite the original version:

Ahlava, A. (2020). International CECC Design Competition: Dooble. Architecture, Helsinki Zürich Office Ltd.

This material is protected by copyright and other intellectual property rights, and duplication or sale of all or part of any of the repository collections is not permitted, except that material may be duplicated by you for your research use or educational purposes in electronic or print form. You must obtain permission for any other use. Electronic or print copies may not be offered, whether for sale or otherwise to anyone who is not an authorised user.

Dooble

The Green "Hoffice"

Dooble is transformable furniture. It can be brought in as components and installed into any housing flat. Dooble allows the change of a home into a working space for the dweller or even for another person without compromising intimacy or hygiene. When you are not at home, someone can use your space for working without you having to be worried. The principle is sustainable, supporting an optimized use of space. Dooble does this without disturbing the privacy or security of a tenant or the privacy of a worker: They cannot touch each other's belongings. Dooble is not only sustainable, but also Covid-19 proof.

Dooble is based on the culture of sharing. Our homes are empty most of the time while someone else might need a working space and your home could be just perfect for this. Dooble is practical for highly urban city blocks, where there is a great demand for working spaces and the real estate prices are high, such as Shanghai (or Hangzhou).

Dooble opens and closes its parts depending on the user and the usage, based on movable fixed furniture on rails and an electrical remote control system. When using Dooble as part of housing, all parts belonging to the worker are closed. When in working mode, Dooble has closed all private sections belonging to the dweller. It is not even possible to see each other's stuff. Touching it is impossible.

We have here illustrated the most difficult location for Dooble – a typical single room flat. A series of plans shows how Dooble can be assembled into any type of local contemporary industrial flat. Dooble is naturally easy to be installed on a larger flat as well (as shown in scale model photographs). In larger cases, other rooms are locked, when the working person is using the flat. Nothing prevents you to install many Dooble units in a flat however!

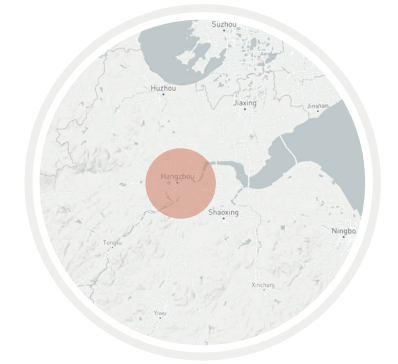
Shared space / Split time!



Solution for dense cities!



SHANG HAI



HANG ZHOU

Functions in modules



Fitting everywhere!



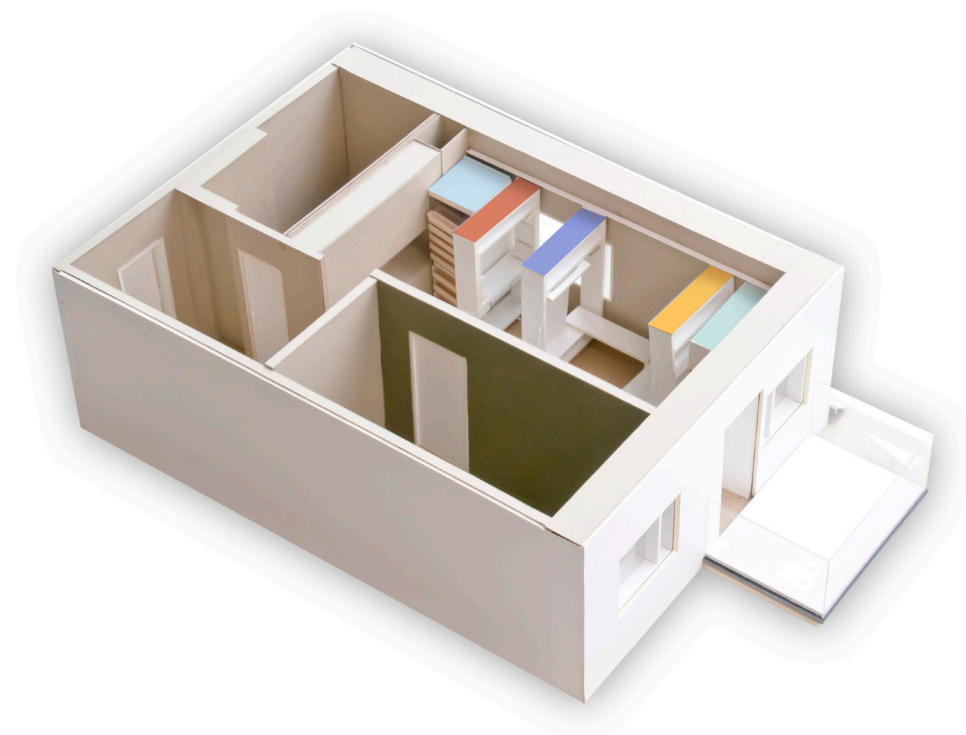
Dooble The Green "Hoffice"

home

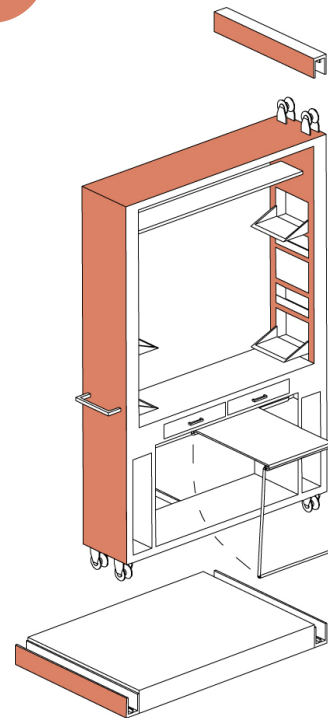
Dooble occupies some space in a living room, but it compensates all functions it covers. For a person living in the flat, Dooble includes dining, sofa and even sleeping modes.

The kitchen cabinet doors are closed, when the dweller is not there. The tenant and the worker don't use each other's intimate belongings. We assume that the worker goes outside the flat for lunch – making a break and walking a little is healthy!

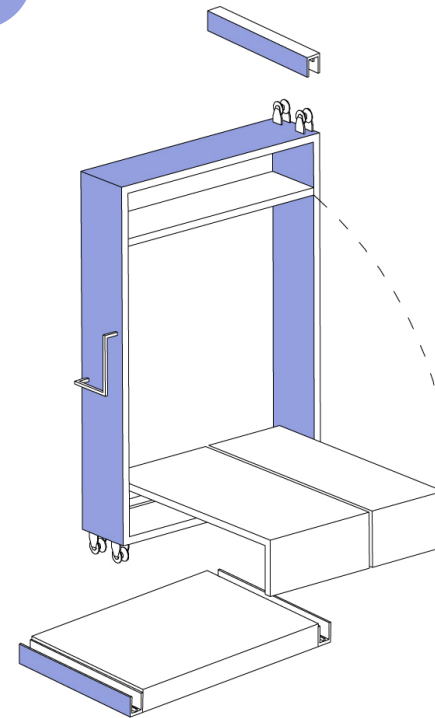
In practice, when someone leaves the flat, he / she simultaneously closes the entire Dooble package. The next user can open only those parts, where he / she has access rights to.



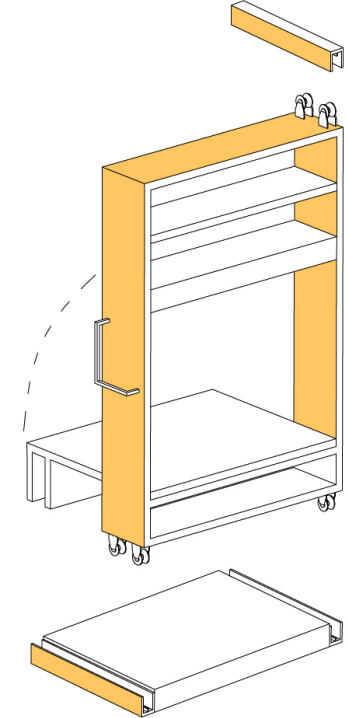
Modules



TABLE



BED



SOFA

No privacy problems!

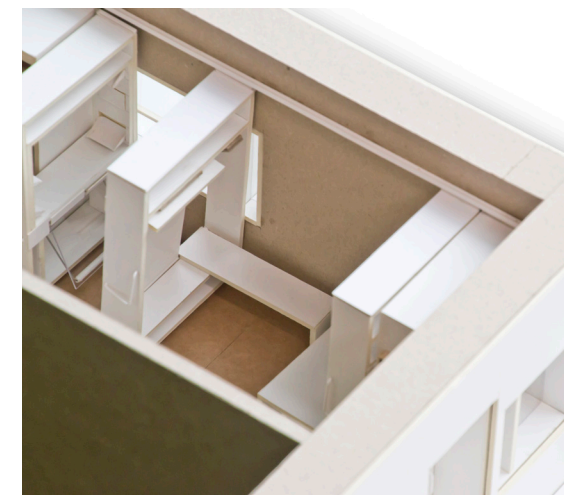


TENANT



WORKER
VISITOR

Model photos

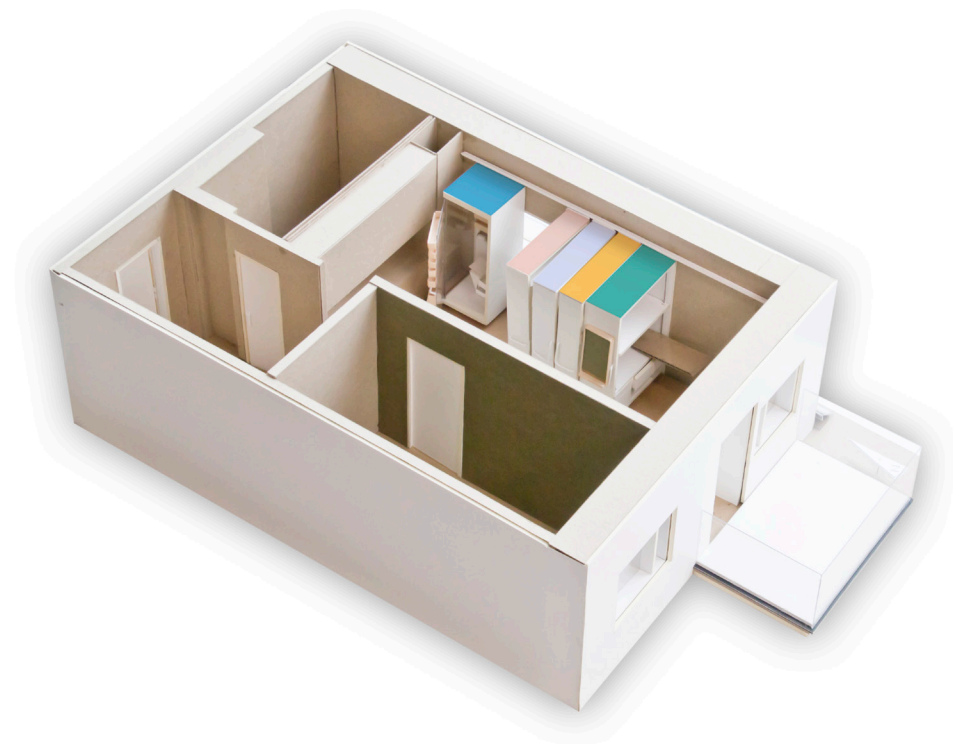


Dooble The Green "Hoffice"

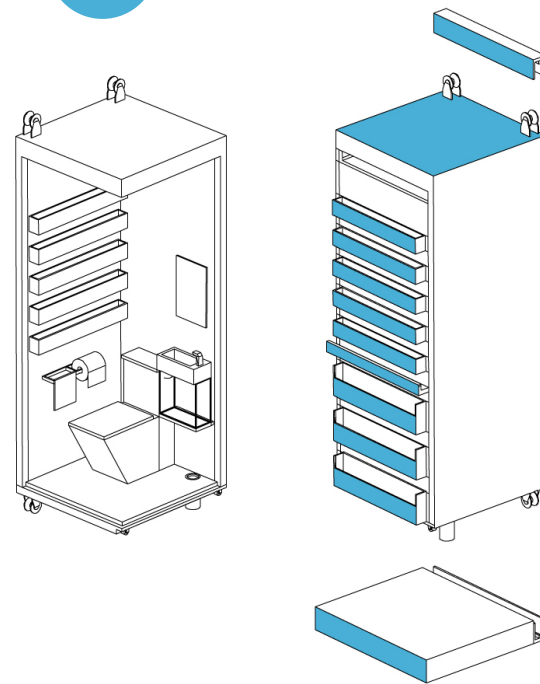
work

For the working person, Dooble has not only work-station and storage sections, but also a private bathroom.

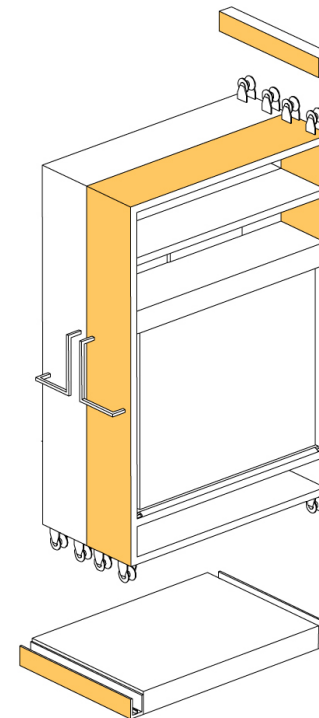
The bathroom includes a toilet and a shower. The bathroom cannot be used by the tenant – it is entirely at the use of the worker. The pipes of the bathroom run under an elevated floor component and can move along the sliding bathroom. The elevated floor is part of the Dooble system and comes with a wheelchair ramp. Dooble can be installed into any existing home or any new flat.



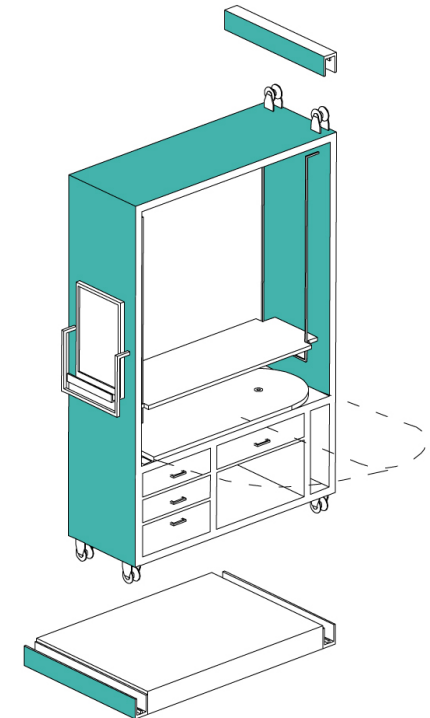
Modules



TOILET



SHELVES



WORK SPACE

No privacy problems!



TENANT



WORKER
VISITOR

Model photos



Dooble The Green "Hoffice"

prefabrication

For manufacturing, all the Modules are prefabricated in factory. Mass production saves cost. And different module parts can be arranged according to different scenario making it quite flexible and customized.

With the advanced logistics system in Yangtze delta, it is easily transported and delivered. It can be dismantled and mantled as it is just a portable kit. Therefore, it is economical accessible to the mass.

It can fit into both co-working space and loft space which made it environmental and social sustainable and easily be applied.

The left below picture shows the open office mode with several private Dooble units close hygienically and provide shelter. The right below picture shows the possibility of housing loft



Great green economy potential!

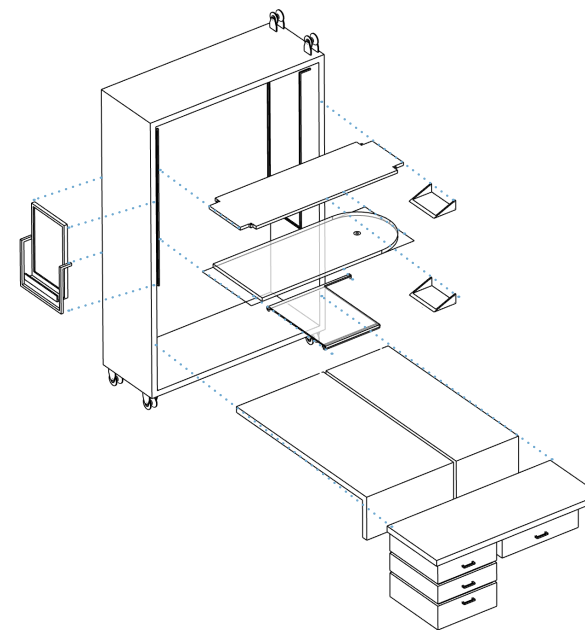


FLEXIBILITY

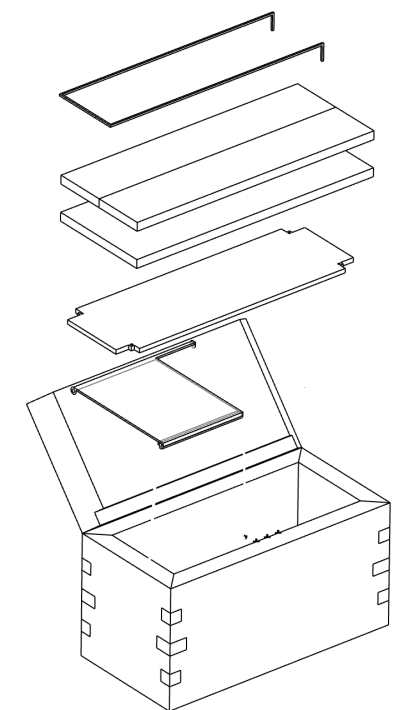


GREEN ECONOMY

Module parts



PREFABRRICATION



DELIVERY

Model photos

